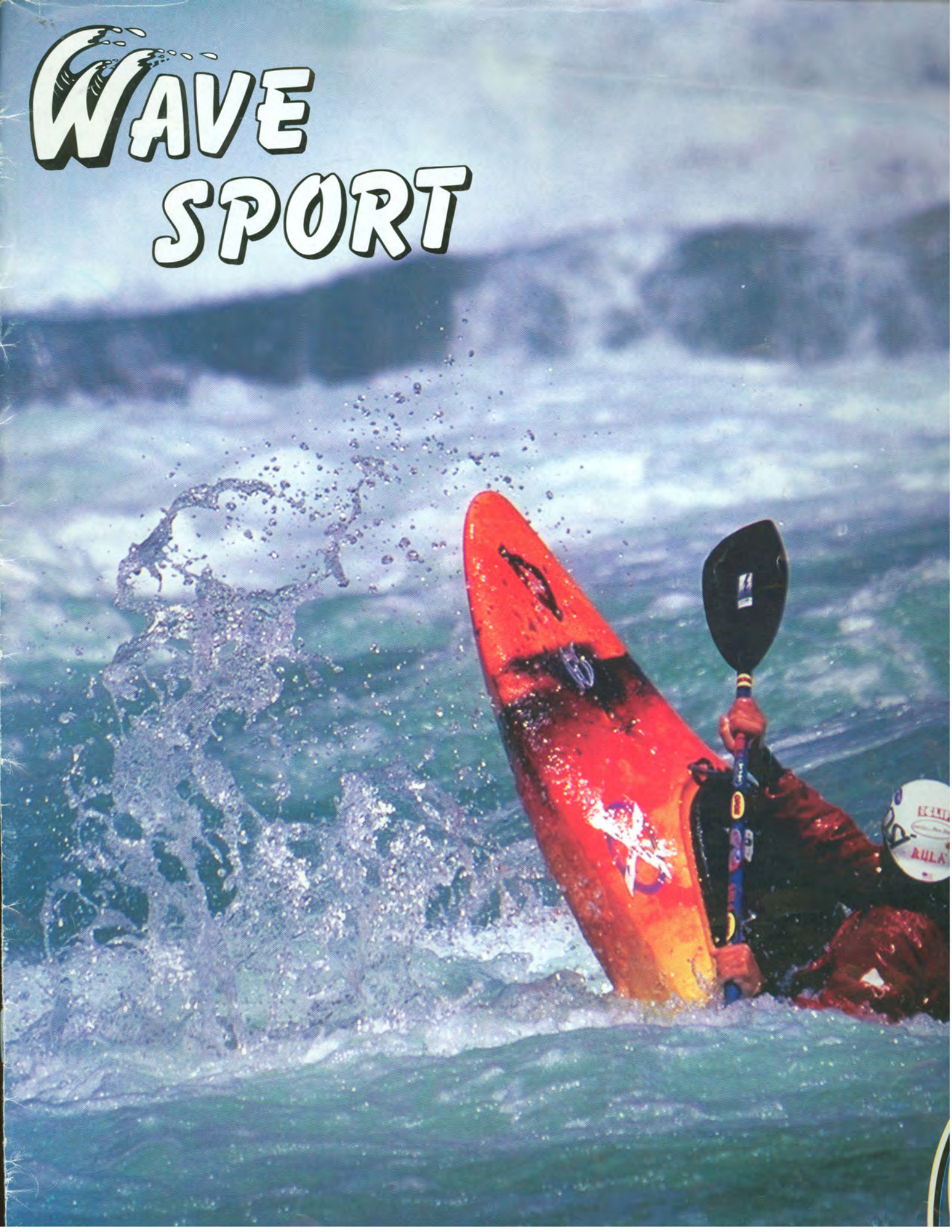


# WAVE SPORT



# Paddlers

Wave Sport was founded on a passion for kayaking. It's our prime motivation. Our employees, our designers, our managers and investors paddle. Look for us on the rivers. We want to paddle with you. We want to hear what you have to say. We want to know what you want. Of course, mostly we just want to paddle.



Photo by Kevin Warren

Colbert, General Manager



Photo by John Lovett

Kate Holihan, CFO



John Jaycox, R & D

## Whitewater

Whitewater kayaking period. Well, maybe some good ocean surf too, but only if you can carve, spin, and throw ends out there. We're all about kayaking, and everyone knows it. We don't answer to an outside board of directors whose only motivation is profit. Our focus is whitewater products. We design and produce the best.



Photo by Chris Emerick

Joel McBride, Sales

## Today

No matter what we're doing today, we know it's going to get better. Every year since 1995 we've released one or more new play boats. Each one has surpassed the previous models in terms of its innovative freestyle performance, yet every one we make today still serves its purpose. Many of our older play boats like the Kinetic and Godzilla have become today's cruising standards.



Photo by Chris Emerick

John Lovett, Marketing

## Tomorrow

...ve the paddlers' imagination is their only limitation in our sport. We all how much fun we can have. We imagine new lines, new moves, and experiences. The only way to get to that future is to create it. Every boat l is that future.



Chan Zwanzig, President

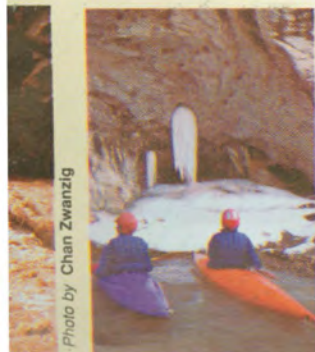


Photo by Chan Zwanzig

1982, Frozen Green Dinosaur Monument



Photo by Chan Zwanzig

1983, Bolivian Shuttle, Kate Holihan



Photo by Chan Zwanzig

1986, First Descent Southfork of the White, Chan Zwanzig



Photo by Mike Karseboom

1987, Tygart River, Chan Zwanzig



Photo by Kevin O'Brien

1992, Gore Canyon, Chan Zwanzig



Chan & his mom, Trudy

Photo by Chris Emerick



Chan Zwanzig, Derby Creek

Photo by Chris Emerick



Retro, Molder

Photo by Chris Emerick



Chan & Chris



John Jaycox, paddles the Gorepedo to first place in Gore race, 1995

Photo by Darren Edwards



Father & son, Rocket & Retro

Photo by Tanya Shuman



Bo Colbert, North Fork Fish Creek

Photo by Paul Kerrison



Eliot, Assembler

Photo by John Lovett



1998 Crew

Photo by John Lovett



Dennis, Molding Foreman

Photo by John Lovett



John Jaycox, R&D

Photo by John Lovett



David & Scott, Production Manager & Assembly Foreman

Photo by John Lovett



Joel McBride, Cross Mtn.

Photo by John Lovett



Ernie, Shipping/Receiving Manager

Photo by John Lovett



Eric Jackson, R & D

Photo by John Lovett



Keith, Materials Manager

Photo by John Lovett



Father & son, EJ & Dane

Photo by John Lovett



zwanzig



zwanzig



Chan Zwanzig



Chan Zwanzig



zwanzig



Tanya Shuman, Clear Creek

Photo by John Lovett



Jason Bates, Trestle Hole

Photo by Chris Emerick



... Canyon Doors

Photo by Dan Gavere



...eam WS Japan, Gore Canyon

Photo by Chris Emerick



Photo by Dan Gavere

Eric "Wick" Southwick, Super Wave, Kootenai

What sets the X apart from all the other playboats on the market?

## Everything!

The X carves like a surf board, swaps ends like a snowboard, and catches air like a wakeboard. It's no accident. This twin tip, planing hull surpasses the imagination of these sports.

Playboating is all about changing direction and the X has the ability to do this. This self-motivated boat knows how to do all the moves from side grinding surfs to vertical links.

Beginners through experts can tap into new ways to have fun in this slice n' dice machine. Put on your noseplugs and a grin and go for it!

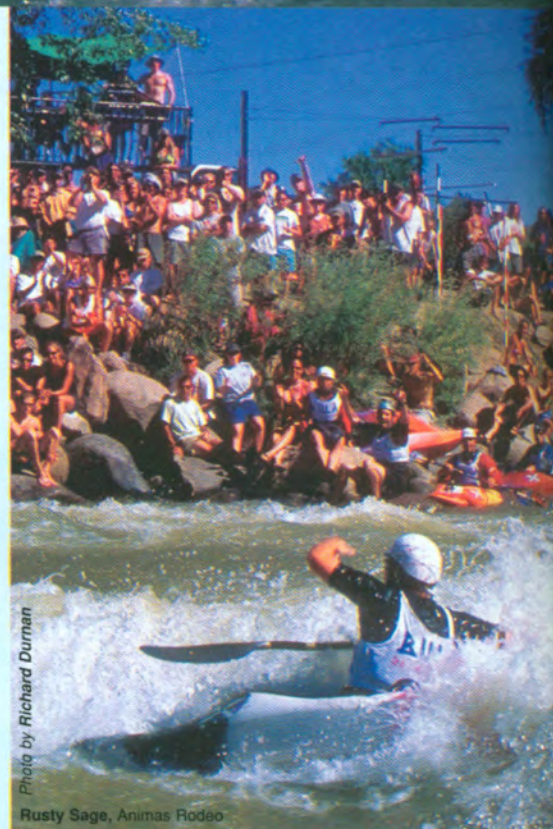


Photo by Richard Durman

Rusty Sage, Animas Rodeo



LENGTH	WIDTH	DEPTH	VOLUME	WEIGHT	PADDLER WEIGHT	PADDLER HEIGHT
8' 0"	24 1/2"	12"	55 gal	37 lbs	80-200 lbs	5'0"-6'4"

# Z

## Super Size Value!

The Z delivers performance in a large package. It's the ultra comfortable playboat.



Sam Drevo, Cross Mountain

Photo by Eric Southwick

The Z handles rivers so well you'll forget you're in a playboat. With aggressive chines and balanced volume distribution this boat stays on line in pushy water and makes hard moves attainable.

Futuristic planing surfaces make surfing and spinning easier than ever. Linked moves are automatic with slicing ends. Superior control and stability take your play to a new level.



Ted Keyes, Gore Canyon

Photo by Chris Emerick

If you want comfort and style in a performance playboat take the Z.



EJ, Derby Creek

Photo by Chris Emerick



LENGTH    WIDTH    DEPTH    VOLUME    WEIGHT    RABBLER    RABBLER



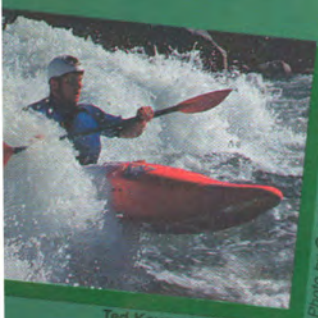
Ted Keyes, Scissors Rapid

Photo by Chris Emerick



EJ, Chris, Kim, White Salmon

Photo by Skip Brown



Ted Keyes, Lunch Counter

Photo by Grant Amara



Ted Keyes, Snake River

Photo by Grant Amara



Photo by Skip Brown

Kim Sprague, White Salmon



## Need a big water, hair boat that creeks and plays?

We took amazing hull technology, applied it to the hardest conditions, topped it off with a high volume deck, and came up with a Y. It makes difficult water easily manageable while maximizing your fun.

Slides and rock 360's, busting through seams and skipping over holes, the Y's displacement and balance keep you in control and on the surface. When you find a playspot, the planing hull and kicked up ends spin and surf it up.



Check out its airwheel capacity at your local ender spot.

It's a great choice if you're looking to take your boat everywhere.

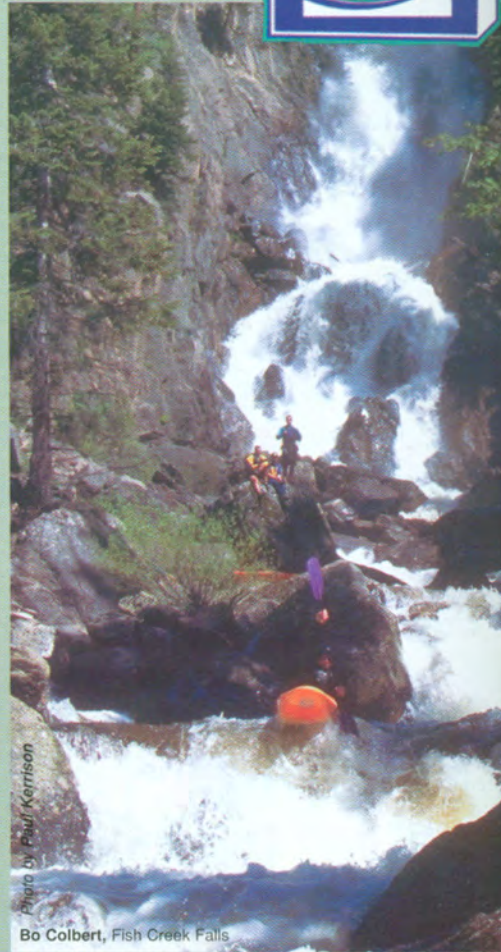


Photo by Paul Kerrison

Bo Colbert, Fish Creek Falls

LENGTH	WIDTH	DEPTH	VOLUME	WEIGHT	PADDLER WEIGHT	PADDLER HEIGHT
8' 2"	25"	12 3/4"	73 gal	41 lbs	120-260 lbs	5'0"-6'

## The X, Y, Z Series

Concepts years in the making are exploding on the world of whitewater kayaking. The X, Y, Z Series has blown the doors off the limitations of this sport.

Other sports have had periods of imagination and innovation that carried them to new levels. Recognizing and appreciating this has opened our minds to kayaking's potential.



Technology and performance in sports such as aviation and boardsailing have inspired us. Our own imagination has defined new goals in whitewater paddling. We've applied multiple technologies to achieve breakthroughs in design and performance.

Every boat we build opens new possibilities. The X, Y, Z Series lets you create moves that transcend our vision. The surprises hidden in these designs can excite



Photo by Taylor Robertson



Dan Gavere, Underwater Catwheel, Maui

Photo by Chris Emerick



Sam Drevo and Ted Keyes, West Coast

Photo by Chan Zwanzig



Rusly Sage

Photo by Chris Emerick



Skip Brown



Dan Brabec, Cross Min.

Photo by Tanya Shuman



Eric "Wick" Southwick, Elbow Falls

Photo by Henri Georgi



Dave Pinkerman, Steamboat

Photo by Chris Emerick



"Wick" & Sam

Photo by Chris Emerick

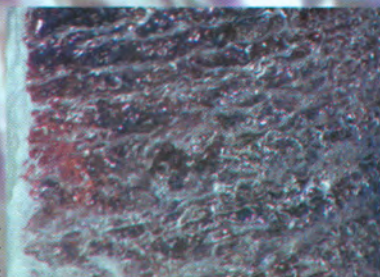


Chan

Photo by Tanya Shuman



Luke H



EJ, Wave Win







Sam Drevo & Chris Emerick with Boom Cam

Photo by Dan Gavere



Jim Heise & Dan Gavere, Maui

Photo by Chris Emerick



Double Wheel, "Wick" & Tanya Shuman

Photo by Brooke Adkins

# WAVE SPORT



Jamie Simon

Photo by Chris Emerick



Billy Craig, Spirit Falls

Photo by Brandon Knapp



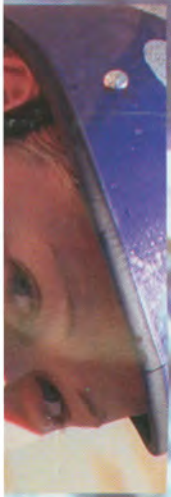
"Wick", Poudre River

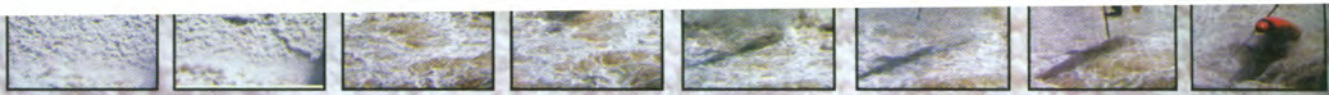
Photo by Dan Bailey



EJ, Vallecito Creek

Photo by Dan Gavere





Sam Drevo, somewhere?

## Details

Wave Sport's commitment to details separates us from the pack. We set a standard for others to aspire to and for you to enjoy.

Our seat integrates a crotch wedge for maximum control with an ergonomic shape that fits the widest range of paddlers comfortably. An integral and removable molded backrest provides maximum support, with or without a backband, while allowing access for spare paddles and gear. Our seats are pre-cut for easy installation of an optional backband.

Drain plugs are recessed to prevent breakage and molded in for a better seal.

Wave Sport was the first to bring you recessed stainless steel security bars. Introduced in 1996 they use leak proof molded-in nuts and are easy to clip to, super strong, and tamper proof for locking. The 4000lb test webbing grab loops are secured with molded in nuts for strength and dryness. The combination of security bars and grab loops provide 4 attachment points on the deck of our kayaks.

Heel cups are pre-cut into our front pillar and the bulk head footrest is foam padded for bare feet. The X comes with adjustable aluminum foot pegs. Thighbraces come in different sizes for personal fit and are easily interchangeable. All decks are finished with a texture that reduces glare and provides a non-slip surface.

## Molding

Wave Sport builds rotomolded, crosslink polyethylene whitewater kayaks only! We use crosslink because it's the longest lasting, structurally soundest plastic. Our rotomolding process controls the thickness of the plastic and places it optimally for strength, stiffness, and durability. After molding, each kayak is ultrasound tested in over 50 locations for quality assurance.

## Warranty

We have an excellent three-year warranty program. You probably won't need it with less than 1% annual breakage. High Altitude Molding sets the standard. See your dealer or our Owner's Guide for details.



Photo by John Lovett

Wave Sport Seat



Photo by John Lovett

Wave Sport Backrest



Photo by John Lovett

Grab Loop and Drain Plug



Photo by John Lovett

Wave Sport ThighBraces



Photo by John Lovett

Stainless Steel Security Bars



Ted Keyes, Cataracts of the Kern

## How much boat do you really need?

This cartwheeling machine is the boat that Jamie Simon and Eric Jackson won silver medals in at the 1997 World Rodeo Championships on the Ottawa River, Canada. If you're into playboating and low volume creeking, the Stubby at 7'5" gives you everything you'll ever want. Even the smallest river features are great play spots for Stubby.

"Wick", 1st competition Wave Wheel, Derby Creek



Photos by Kevin Warren



Controllable and incredibly agile, the Stubby boofs effortlessly and turns on a dime. Hard chines in the middle of the hull and

progressively stepped bevels in the ends, loosen Stubby for effortless spins and clean vertical slices in its play mode.

Paddlers of all sizes take the Stubby everywhere. Not

only is the Stubby a world class play boat, it's an easy to paddle river runner suitable for beginners. Stubby is easy to roll, a great learning tool and a tumbling, spinning rodeo trainer for intermediates and advanced boaters.



Erica M



Jamie Simon  
World Championships Ottawa



Jimmy Blaker



Photo by Scott Harding



Photo by Kevin Warren

Dan Gavere, Pine Creek Rapid



Photo by Dan Gavere

Tanya and Erica, Fibark Rodeo



Photo by Michael Clark

Ed Lucero, Albuquerque



Photo by Heather Kausman

Roll practice

in a wide range of conditions.

The super fast, semi-planning hull mellows out in the tips for the perfect combination of ferries and carved turns. Short hard chines and thin ends are easy to surf and initiate play moves.

Designed for the small and medium sized paddler, the Kinetic has plenty of potential



energy. Beginners will love its easy rolling. Intermediates and advanced paddlers will carve up the river and play at will.

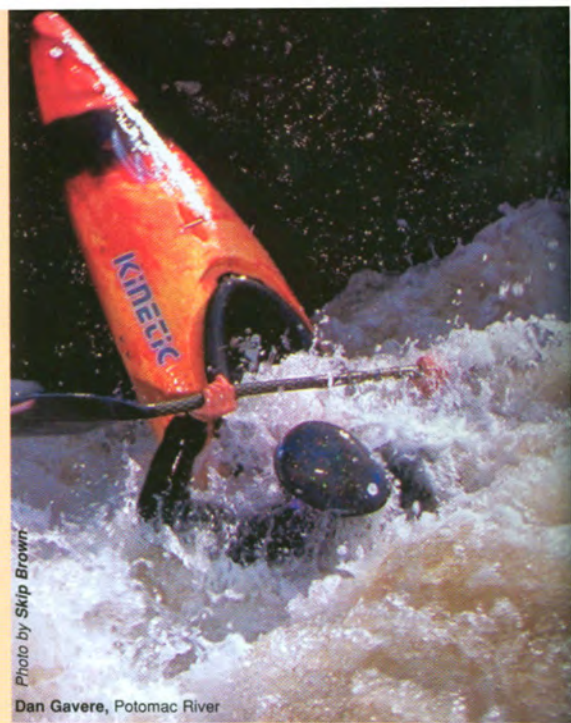


Photo by Skip Brown

Dan Gavere, Potomac River

# KINETIC



Photo by Mike Mowery

Chris Emerick, Barking Dog

LENGTH	WIDTH	DEPTH	VOLUME	WEIGHT	PADDLER WEIGHT	PADDLER HEIGHT
8'8"	23 1/4"	12 1/4"	54gal	39 lbs	80-200 lbs	4'10"-6'2"



# GODZILLA

Jamie Simon, Middle Fork of the Tule

Photo by Brandon Knapp

Does your kayak make you feel like Shaquille O'Neal in a compact car?

Don't worry, Godzilla is a monster of a boat with room to spare. You'll see this boat everywhere, cruising, playing in holes, and surfing waves.

With medium high volume, hard chines, progressive rocker, and a large planing surface, this boat cruises easily in big water, and front and back surfs amazingly well.



Photo by Chris Adleman

Scott Frazer, Lower Kern



The Godzilla's flared sidewalls and wide hull make it friendly for beginners and advanced paddlers pushing the limits. Paddlers of all sizes are impressed by the boat's ability to play while river running.



Dan G



# ave Sport ric Shells

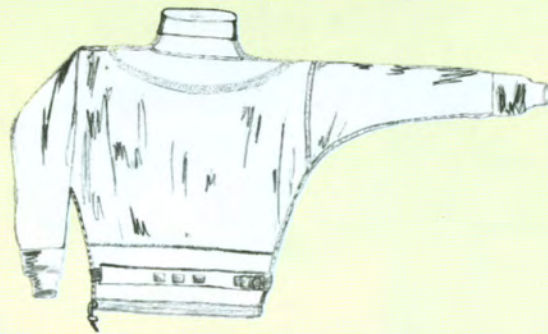
(Zér-ick) adj.

ns of extreme dryness.

c Shells have innovative Hydro Seal  
for the waist, ankles, and neck. We  
e neoprene to our Xeri Skin membrane  
g glued joints that are bulky, break down,  
. We have eliminated the need for a  
kirt and minimized bulk at the waist.  
port Xeric Shells make no compromises  
a performance and comfort; you can have



Mitchell wearing a  
3.0 Stretch Shell Top



## Xeric 2.0 Shell Top

Two way stretch knit nylon outer shell  
Latex wrist gaskets



## Xeric 3.0 Stretch Shell Top

Durable four way stretch woven  
Supplex™ fabric outer shell with  
Durable Water Repellent (DWR) finish  
Latex wrist gaskets

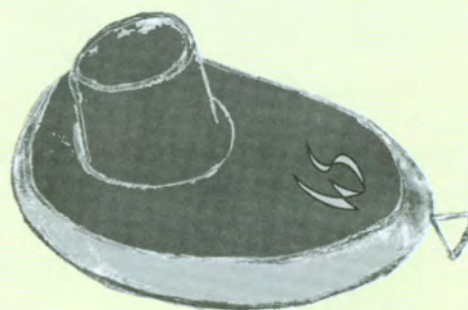


## Xeric 2.0 Shell Pants

Two way stretch knit  
nylon outer shell

## Spray Skirt

Made of shaped Rubatex 1400N neoprene with a  
Cordura® laminate cockpit exterior. All seams are  
glued and taped. A wedge shaped rand guarantees  
a tight cockpit seal and keeps water out.



## Spray Skirt

# Base Layers

These layering garments are designed to wick moisture away from the skin and transfer that moisture to the nylon outer layer. This eliminates conductive heat loss where your body's heat and the warm air pillow surrounding it are drawn away by the cold exterior shell. All garments are four way stretch nylon knit exterior laminated to a mid weight polyester fleece. They are wind and water resistant.



Photo by Tanya Shuman

Terri Lovett wearing a Thermatek Vest & Socks with a stretch CORDURA® Knicker

# ThermaTek Fleece



ThermaTek Top



ThermaTek Tights



ThermaTek Shorts



ThermaTek Skull Cap



ThermaTek Vest

# Street Gear



Fleece Pullover



Zip Polos



Fleece Hood



## T-Shirts

100% cotton Beefy-T  
3 color silkscreen  
front and back



## Hats

Embroidered logos,  
100% washed canvas  
Velcro closure

# Wave Sport Guarantee

Wave Sport guarantees all of its products against manufacturing and fabric defects for the life of the product.



Wave Sports, Inc.  
P.O. Box 5207  
Steamboat Springs, CO 80477