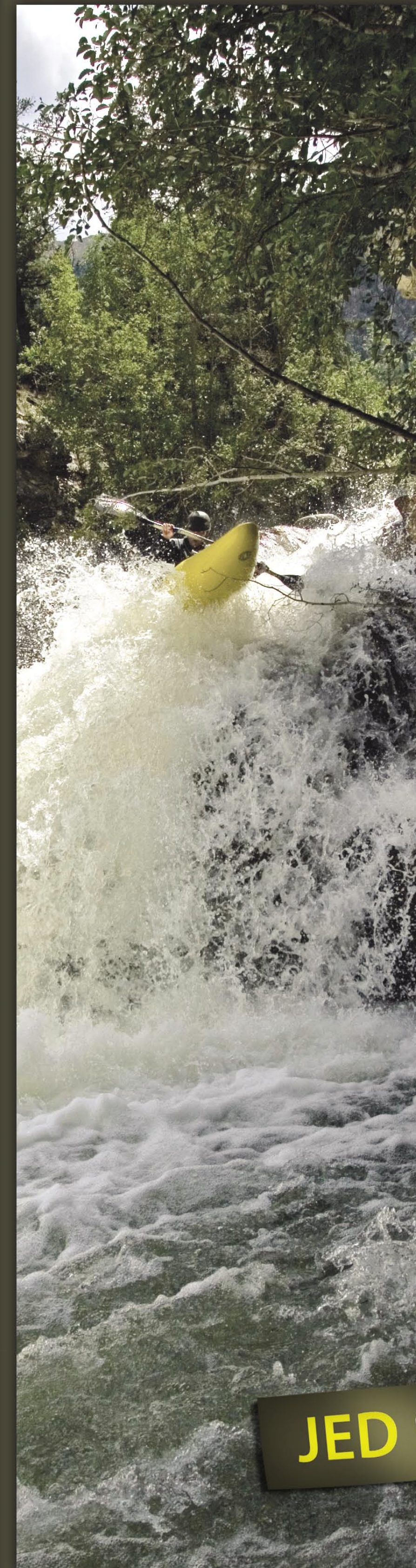


doubleyouess



wave sport 

JED SELBY

white water kayaks **period**  
doubleyouess.com  
wavesport.com



January 2008	February 2008	March 2008	April 2008	May 2008	June 2008	July 2008	August 2008	September 2008	October 2008	November 2008	December 2008
S M T W T F S	S M T W T F S	S M T W T F S	S M T W T F S	S M T W T F S	S M T W T F S	S M T W T F S	S M T W T F S	S M T W T F S	S M T W T F S	S M T W T F S	S M T W T F S
1 2 3 4 5	1 2	1	1 2 3 4 5	1 2 3	1 2 3 4 5 6 7	1 2 3 4 5	1 2	1 2 3 4 5 6	1 2 3 4	1	1 2 3 4 5 6
6 7 8 9 10 11 12	3 4 5 6 7 8 9	2 3 4 5 6 7 8	6 7 8 9 10 11 12	4 5 6 7 8 9 10	8 9 10 11 12 13 14	6 7 8 9 10 11 12	3 4 5 6 7 8 9	7 8 9 10 11 12 13	5 6 7 8 9 10 11	2 3 4 5 6 7 8	7 8 9 10 11 12 13
13 14 15 16 17 18 19	10 11 12 13 14 15 16	9 10 11 12 13 14 15	13 14 15 16 17 18 19	11 12 13 14 15 16 17	15 16 17 18 19 20 21	13 14 15 16 17 18 19	10 11 12 13 14 15 16	14 15 16 17 18 19 20	12 13 14 15 16 17 18	9 10 11 12 13 14 15	14 15 16 17 18 19 20
20 21 22 23 24 25 26	17 18 19 20 21 22 23	16 17 18 19 20 21 22	20 21 22 23 24 25 26	18 19 20 21 22 23 24	22 23 24 25 26 27 28	20 21 22 23 24 25 26	17 18 19 20 21 22 23	21 22 23 24 25 26 27	19 20 21 22 23 24 25	16 17 18 19 20 21 22	21 22 23 24 25 26 27
27 28 29 30 31	24 25 26 27 28 29	23 21 25 26 27 28 29 30 31	27 28 29 30	25 26 27 28 29 30 31	29 30 31	27 28 29 30 31	24 25 26 27 28 29 30 31	28 29 30	26 27 28 29 30 31	23 24 25 26 27 28 29 30	28 29 30 31



This information is intended to educate you about various styles of whitewater kayaks to help you make a more informed decision when choosing one to suit your needs.

## EVALUATING YOUR OPTIONS

The first thing to remember is this: any boat you fit inside is an option. Your personal dimensions, such as foot size, inseam, thigh and hip size affect your ability to get inside a kayak. This is especially true when choosing a playboat of river running playboat, since these boats are smaller and therefore have less overall room for your lower body to fit inside.

## OUTFITTING

The adjustability of a kayak's outfitting (foot braces, thigh hooks, seat, hip pads and backband) is a huge factor when it comes to getting inside a boat and being comfortable. Make sure to adjust the outfitting when trying out different boats. Each person is unique, and good outfitting allows for maximal adjustment to match an individual's dimensions. What may seem like an uncomfortable fit at first can quickly become perfect with some adjustment to the outfitting. A well outfitted boat should fit like a good pair of running shoes; snug and free of pressure points.

## SIZING

Recommended weight ranges for each boat are based around paddler weight, kayak volume, and intended use. Within the weight range for a particular model, the boat will perform as designed, but performance will still vary based on your weight. If you are above or below the recommended weight range, this doesn't mean that you can't paddle the boat, but it might not perform as intended per the design goals.

## VOLUME

All Wave Sport boats indicate volume in gallons (for example, the Diesel 65 has 65 gallons of volume, and the Project 45 has 45 gallons of volume, and so on). Volume is the amount of air inside the kayak. It is the one measurement you can't easily get yourself, and is good to know for comparison purposes. All of our volumes are accurately measured, but don't assume all kayak companies do the same.

## THE BOTTOM LINE IS HOW DOES IT FEEL?

It's not just about doing a trick, or running a rapid. All the boats out there can do the same basic things. The question is, how does a boat feel when you're surfing a wave, peeling out of an eddy, or paddling through a big rapid? Our goal is to design boats that go beyond 'capable'. Wave Sport is committed to creating boats that interact with the water and you in a unique way.

## DEMO!

Take the information you've learned here, go to your local Wave Sport dealer and try out some boats! That's really your best bet for determining which one(s) are suited for you. Your goal should be to find a boat that is comfortable and matches the style of paddling you plan to do.



## FREESTYLE:

Freestyle kayaking is based around performing tricks in rapids as opposed to simply negotiating them. It also includes 'park and play' kayaking, where a paddler will stay at one spot on the river and perform tricks. Whitewater parks typically offer rapids optimized for freestyle kayaking. Boats in this category have specialized hulls similar to surfboards, allowing them to 'surf' river features such as waves and hydraulics. Freestyle boats are short (typically around six feet long) and have most of their volume concentrated around the center of the boat.

## PROJECT:

The Project is a result of our commitment to refinement. From chine angle to sidecut profile, volume distribution, rocker profile, and how all of these variables interact, we've been able to take high performance playboats to a new level. Jump in a Project and project your playboating to new heights.

### FEATURES:

- Customizable foam bulkhead system
- Thermoformed seat and hull beam
- Two deep pocket grab handles
- Plush thermoformed seat pad
- Thigh ratchet backband
- Adjustable thigh-hooks
- Water bottle

### PROJECT 45

Weight range: 80-140 lbs. / 36.3kg-63.5kg  
Cockpit: 33.5"x19"/83.75cmx47.5cm  
Deck height: 12"/30 cm  
Boat weight: 30 lbs./14kg  
Volume: 45gal/170.3L  
Width: 24.5"/61.3 cm  
Length: 5'11"/177.5cm



### PROJECT 52

Weight range: 130-190 lbs. / 8.9kg-86.2kg  
Cockpit: 33.5"x19"/83.75cmx47.5cm  
Deck height: 12.5"/31.5 cm  
Boat weight: 31 lbs./14kg  
Volume: 52 gal/196.8L  
Width: 25"/62.5 cm  
Length: 6'1"/182.5cm



### PROJECT 62

Weight range: 180-240 lbs. / 81.7kg-108.9kg  
Cockpit: 33.5"x19"/83.75cmx47.5cm  
Deck height: 13.75"/34.4 cm  
Boat weight: 32 lbs./15kg  
Volume: 62 gal/234.6L  
Width: 25.75"/64.4 cm  
Length: 6'4"/190 cm



## CREEKING:

Going from point A to point B through extremely difficult rapids, including waterfalls, slides, technical rapids, and big volume rapids. Most paddlers start 'creeking' by river running on less difficult rapids and working their way up to more difficult rapids as their skills improve. Boats in this category are essentially river running boats optimized for safety and performance in 'extreme' whitewater.

## HABITAT:

The Habitat received Paddler & Kayak Magazine's 2007 "Best New Creekboat" award.

Next level creekboat performance, safety and comfort. With the only displacement hull in our line, the Habitat exudes confidence and puts you in control when faced with the most difficult whitewater of your life. Regardless of where you are on the creeking spectrum, the Habitat will inspire you to step up and drop in.

### FEATURES:

- Adjustable, bomber rotomolded seat with easy access throw rope/water bottle holder
- Displacement hull for soft landings off larger drops and super smooth rolling
- Rotomolded bow pillar with step-out safety feature
- Five deep pocket grab handles
- Adjustable bulkhead system
- Easy stern storage access

### HABITAT 74

Weight range: 100-200 lbs. / 45 kg-90kg  
Cockpit: 33"x19"/82.5cmx47.5cm  
Boat weight: 41 lbs. / 19 kg  
Deck height: 13.5"/34 cm  
Volume: 74 gal/280L  
Width: 25"/63.5 cm  
Length: 8'/244 cm



### HABITAT 80

Weight range: 150-260 lbs. / 68 kg-118kg  
Cockpit: 33"x19"/82.5cmx47.5cm  
Boat weight: 42 lbs. / 19 kg  
Deck height: 14"/35.5 cm  
Volume: 80 gal/303L  
Width: 25.5"/65 cm  
Length: 8'4"/254 cm



## FREESTYLE:

## ZG:

The design that launched the playboating revolution. By combining brilliant volume distribution with a super loose and fast hull for wave surfing, the ZG opens up every playspot to next level potential. An ideal all-purpose freestyle machine, the ZG excels in holes, on waves and in downriver play situations, all on top of its predictable river running characteristics.

### FEATURES:

- Customizable foam bulkhead system
- Thermoformed seat and hull beam
- Two deep pocket grab handles
- Plush thermoformed seat pad
- Thigh ratchet backband
- Adjustable thigh-hooks
- Water bottle

### ZG 48

Weight range: 100-180 lbs. / 45.4kg-81.7kg  
Cockpit: 33"x19"/82.5cmx47.5cm  
Deck height: 11.75"/29.3 cm  
Boat weight: 31 lbs./14kg  
Volume: 78 gal/292.6L  
Width: 24.5"/61.3 cm  
Length: 6'4"/190 cm



### ZG 54

Weight range: 140-220 lbs. / 63.5 kg-99.79kg  
Cockpit: 33"x19"/82.5cmx47.5cm  
Deck height: 12"/30 cm  
Boat weight: 33 lbs./15kg  
Volume: 84 gal/316.4L  
Width: 25"/63.5 cm  
Length: 6'6"/195 cm



## RIVER PLAY:

This style of paddling involves negotiating moderately difficult rapids while still looking for spots to 'play' along the way. Boats in this category are essentially freestyle boats with training wheels. They are slightly longer than freestyle boats and designed to be less aggressive in exchange for a more forgiving nature while negotiating rapids. Excellent for beginner to intermediate paddlers looking to become playboaters. Also great for more advanced paddlers who want a playful design that will run moderately difficult rapids.

## EZG:

If you're looking for a boat to get you down the river with ease and take advantage of all the playspots along the way, this is your craft. The EZG offers the best of both worlds in a user friendly, high performance, river running play machine.

### FEATURES:

- Customizable foam bulkhead system
- Thermoformed seat and hull beam
- Two deep pocket grab handles
- Plush thermoformed seat pad
- Thigh ratchet backband
- Adjustable thigh-hooks
- Water bottle

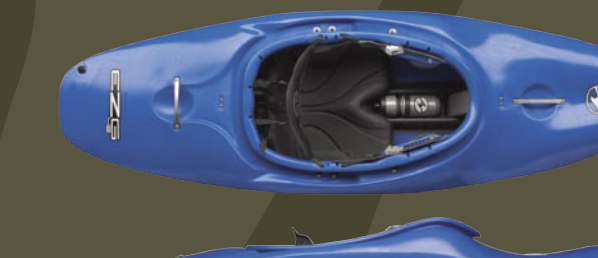
### EZG 42

Weight range: 80-140 lbs. / 36.3kg-63.5kg  
Cockpit: 33.5"x19"/83.75cmx47.5cm  
Deck height: 11.5"/28.8 cm  
Boat weight: 30 lbs./14kg  
Volume: 45gal/170.3L  
Width: 24.5"/61.3 cm  
Length: 6'6"/207.5cm



### EZG 50

Weight range: 130-190 lbs. / 58.9kg-86.2kg  
Cockpit: 33.5"x19"/83.75cmx47.5cm  
Deck height: 12.5"/31.25 cm  
Boat weight: 32 lbs./15kg  
Volume: 50gal/189.2L  
Width: 25"/62.5 cm  
Length: 6'7"/197.5cm



### EZG 60

Weight range: 180-240 lbs. / 81.6kg-108.9kg  
Cockpit: 33.5"x19"/83.75cmx47.5cm  
Deck height: 13"/32.5 cm  
Boat weight: 33 lbs./15kg  
Volume: 60gal/227.1L  
Width: 25.75"/64.4cm  
Length: 6'9"/202.5cm



## RIVER RUNNING:

Going from point A to point B down a stretch of rapids. The focus here is on successful negotiation through rapids, as opposed to performing tricks along the way. These boats are easy to paddle, easy to roll and have enough length and volume to negotiate difficult rapids (typically seven to nine feet long). If you were to have one boat for everything, this would be the style you would want.

## DIESEL:

The SUV of kayaks. Smooth and stable, quick and nimble, responsive and predictable. If you were to just have one kayak, the Diesel would be it. From light creeking to seriously fun play, this all purpose river runner does it all with confidence.

### FEATURES:

- Adjustable, bomber rotomolded seat with easy access throw rope/water bottle holder
- Easy stern storage access
- Four deep pocket grab handles
- Adjustable bulkhead system
- Thigh-ratchet backband
- Adjustable thigh-hooks
- Seat pad
- Water bottle

### DIESEL 65

Weight range: 100-200 lbs. / 45.4kg-90.7kg  
Cockpit: 33"x19"/82.5cmx47.5cm  
Deck height: 12.5"/31.3 cm  
Boat weight: 39 lbs./18kg  
Volume: 65gal/245.9L  
Width: 25"/62.5cm  
Length: 7'6"/225cm



### DIESEL 75

Weight range: 140-240 lbs. / 45.4kg-90.7kg  
Cockpit: 33"x19"/82.5cmx47.5cm  
Deck height: 12.75"/31.9 cm  
Boat weight: 41 lbs./19kg  
Volume: 75gal/283.8L  
Width: 25.5"/63.75cm  
Length: 8'/240cm



## RIVER PLAY:

## FUSE:

The Fuse line begins with the FUSE 35, which was tested and designed specifically for smaller paddlers, including kids. As paddlers grow and develop their skills, the FUSE 35 transforms from a river runner to a high performance playboat. The Fuse blends excellent river running characteristics with high performance play features, effectively fusing the user-friendliness of a river runner with the performance features of a playboat.

### FEATURES:

- Customizable foam bulkhead system
- Thermoformed seat and hull beam
- Two deep pocket grab handles
- Plush thermoformed seat pad
- Thigh ratchet backband
- Adjustable thigh-hooks
- Water bottle

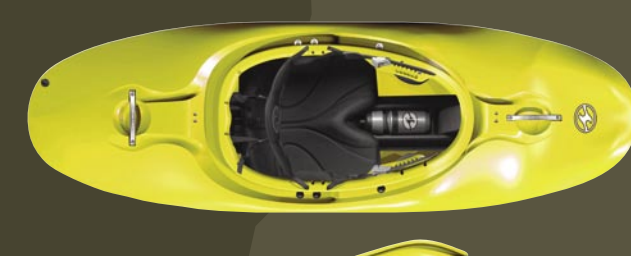
### FUSE 35

Weight range: 60-110lbs./27.2kg-49.9kg  
Cockpit: 17.5" x 27.5"/44.5cm-69.9cm  
Deck height: 10.5"/26.7cm  
Boat weight: 26 lbs/ 11.8kg  
Volume: 35 gal/132.5L  
Width: 24.5"/61.3cm  
Length: 5'10"/178cm



### FUSE 48

Weight range: 100-160 lbs. / 45.4kg-72.6kg  
Cockpit: 33.5" x 19" / 85.1cm x 48.3cm  
Deck height: 12.45"/31.6cm  
Boat weight: N/A  
Volume: 48 gal / 181.7L  
Width: 24.5"/62.3cm  
Length: 6'4"/195cm



### FUSE 56

Weight range: 140-210 lbs. / 63.5kg-95.3kg  
Cockpit: 33.5" x 19" / 85.1cm x 48.3cm  
Deck height: 12.45"/31.6cm  
Boat weight: N/A  
Volume: 56 gal / 212L  
Width: 25"/63.5cm  
Length: 6'6"/201.2cm



### FUSE 64

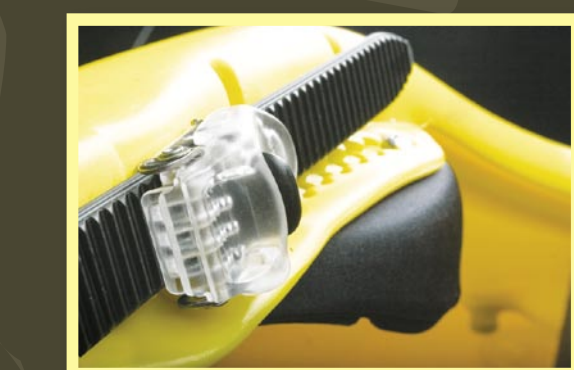
Weight range: 190-270lbs./86.2kg-122.5kg  
Cockpit: 36.25" x 20" / 92.1cm-50.8cm  
Deck height: 13.35"/33.9cm  
Boat weight: N/A  
Volume: 64 gal / 242.3L  
Width: 26"/66cm  
Length: 7'/213.4cm



## F.A.T. OUTFITTING

## FATM 4.0

- Taking our revolutionary outfitting one step further.
- Lighter, more comfortable bulkhead system
- Newly designed thigh ratchet backband
- Lighter, more ergonomic seat

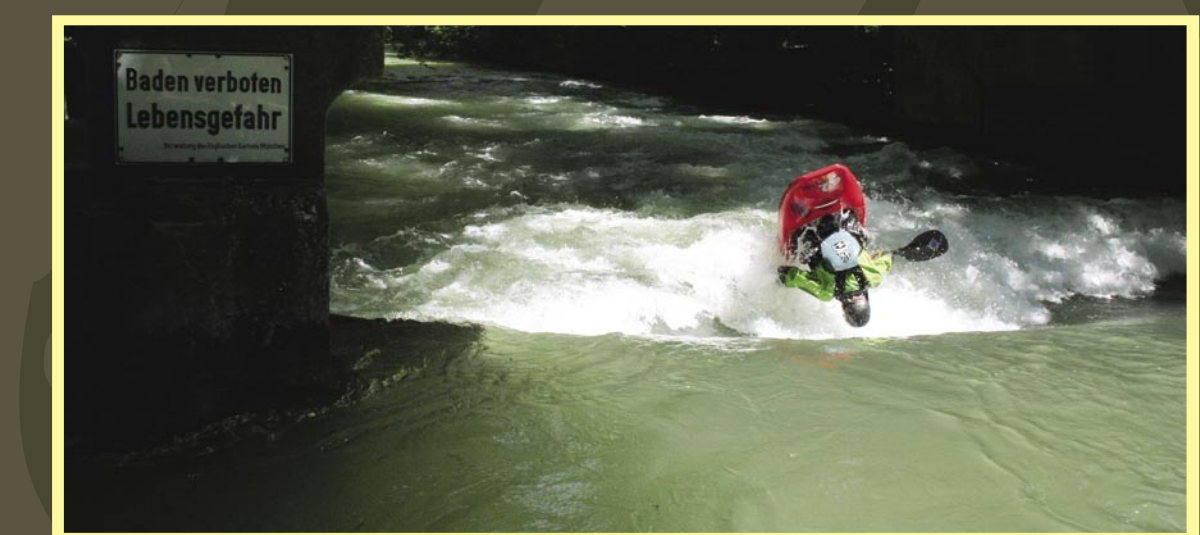


### FEATURES:

- Customizable foam bulkhead system
- Thermoformed seat and hull beam
- Two deep pocket grab handles
- Plush thermoformed seat pad
- Thigh ratchet backband
- Adjustable thigh-hooks
- Water bottle

### COLORS ALL MODELS ARE AVAILABLE IN ALL COLORS

- Blue
- Orange
- Lime
- Yellow
- Red
- Citrus



# 58000156  
© 2008 WaveSport  
A division of Confluence Watersports.  
WaveSport, 111 Kayaker Way  
Easley SC 29642

Wave Sport  
345 Herbert Street  
PO Box 730  
Gananoque, Ontario  
Canada K7G 2V2

For countries not listed please contact international@kayaker.com.

PaddlePro Pty. Ltd.  
Australia  
Tel: +61 40 039 0605  
e-mail: sales@paddlepro.com.au

Outdoor Kayak  
Spain  
Tel: +34 (0) 97 362 1462  
e-mail: info@outdoor kayak.com

Blue and White  
Germany, Switzerland,  
Austria, Italy, Czech Republic,  
Slovenia, Slovakia, Poland  
Tel: +49 (0)8336 9063 0  
e-mail: info@kajak.de

White Water Consultancy  
Great Britain  
Tel: +44(0)1267 223555  
e-mail: sales@wwc.co.uk

Kanoshop Holland  
Netherlands, Belgium, Luxembourg  
Tel: +31 (0) 1052 14333  
E-mail: info@kanoshop.nl

Takashima Life Preservers Co. Ltd.  
Japan  
Tel: +81 (0) 6 6568-3512  
e-mail: a\_tomoshige@tpcc.co.jp